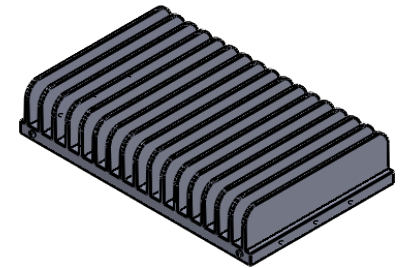
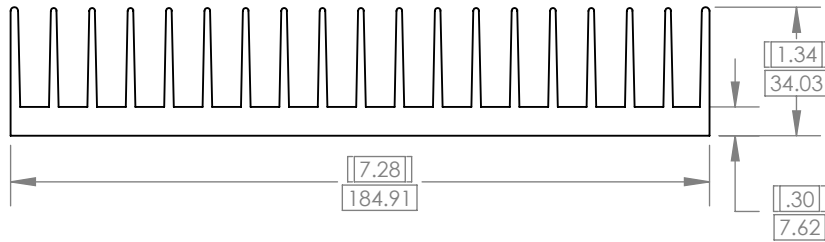


THE INFORMATION CONTAINED IN THIS DRAWING IS SENSITIVE AND PROPRIETARY AND IS THE SOLE PROPERTY OF THORLABS INC. ANY REPRODUCTION IN PART OR IN WHOLE WITHOUT THE WRITTEN PERMISSION OF THORLABS INC. IS PROHIBITED.

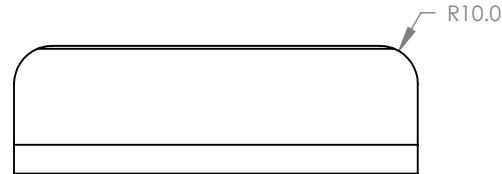
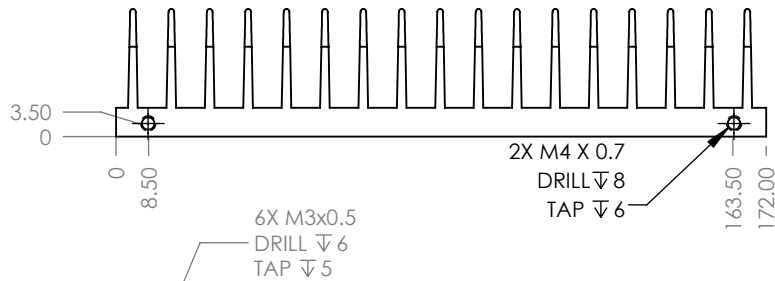
REVISIONS			
REV.	DESCRIPTION	DATE	APPROV.
A	INITIAL RELEASE	4/1/2019	RG
B	ALT STOCK ITEM, CHANGE TO WIDTH, LENGTH AND NUMBER OF FINS.	2/27/2020	RG
C	CHANGE STOCK ITEM, CHANGE WIDTH, LENGTH	5/6/2020	RG

ITEM MODIFIED FROM STOCK COMPONENT

STOCK ITEM



MODIFIED ITEM



NOTES:

1. INTERPRET DRAWING AS PER ASME Y14.5 - 2009 (GENERAL TOLERANCES AS DESCRIBED IN TITLE BOX). MISSING DIMENSIONS PROVIDED IN ATTACHED CAD FILE.
2. PART IS MODIFIED FROM HEATSINKUSA STOCK ITEM. HEATSINK, 7.280" WIDE, ALUMINUM 6063-T6. PROVIDE MATERIAL CERT WITH FINISHED LOT OF PARTS.
3. CHAMFER HOLES TO REMOVE BURRS AND BREAK ALL SHARP EDGES. TUMBLE TO UNIFORM MATTE FINISH. PARTS TO BE PROVIDED FREE OF TOOL MARKS OR KNICKS.

UNLESS OTHERWISE SPECIFIED: DIMENSIONS ARE IN MM. TOLERANCES ARE: DECIMALS .XXX ± 0.030 .XX ± 0.13 .X ± 0.3 ANGLES ± .5 SURFACE FINISH: 3 µm REMOVE ALL BURRS AND BREAK SHARP EDGES 0.1 MAX.	THIRD ANGLE PROJECTION		THORLABS Quantum Electronics	
	APPROVALS	DATE	10335 GUILFORD ROAD, JESSUP MD 20794	
	DRAWN RG	6/26/2020	HEAT SINK, MODIFIED, QCL DRIVER	
	CHECKED XX	6/26/2020		
MATERIAL PER STOCK ITEM	APPROV CCB	SIZE A	DWG. NO. MEC-100-1503 REV C	REV. D
FINISH CLEAR ANODIZED	DO NOT SCALE DRAWING	SCALE 1:2	SHEET 1 OF 2	