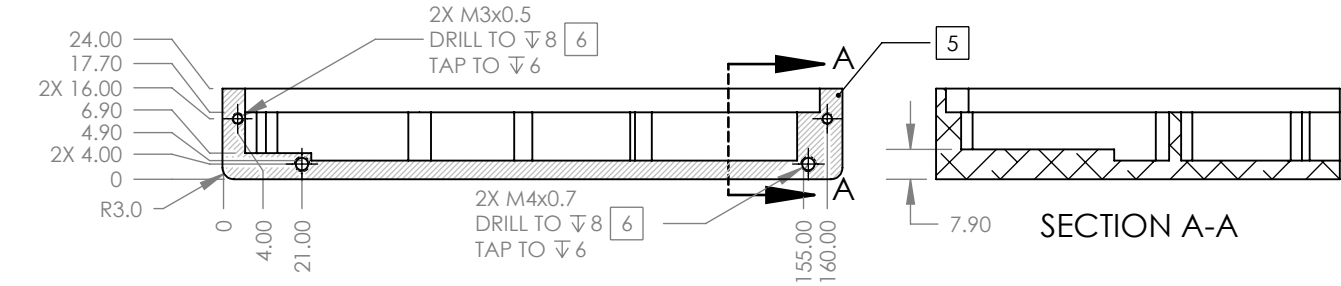
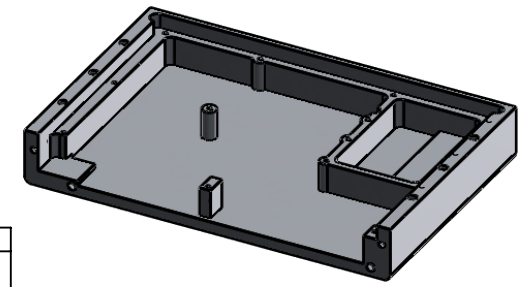
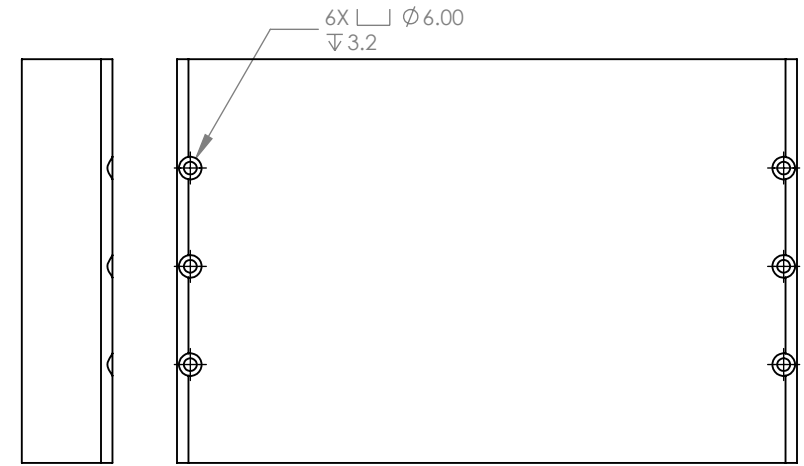
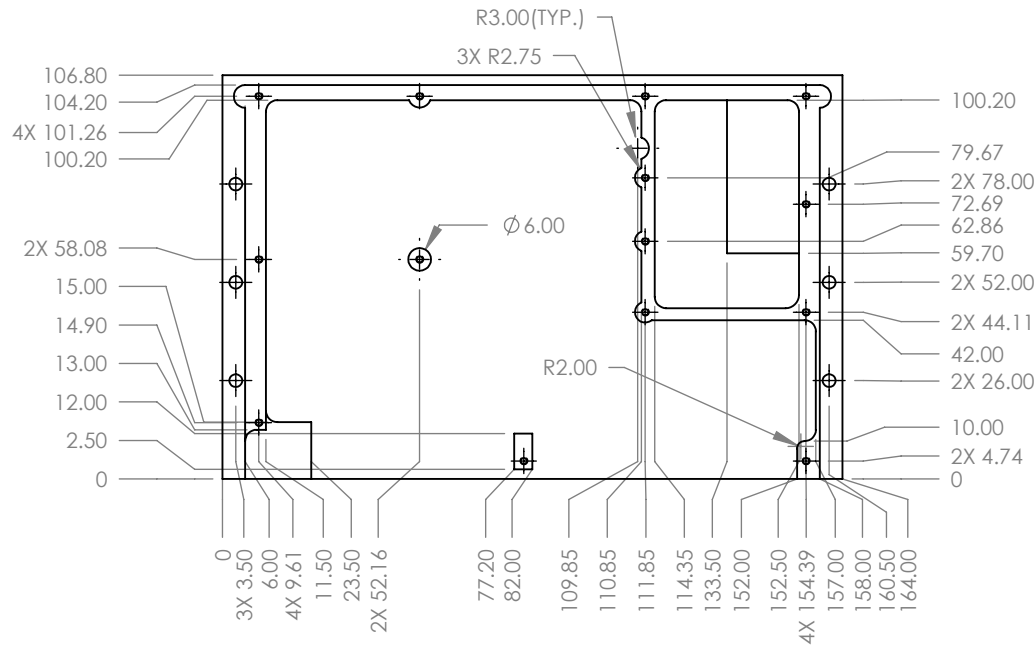


THE INFORMATION CONTAINED IN THIS DRAWING IS SENSITIVE AND PROPRIETARY AND IS THE SOLE PROPERTY OF THORLABS INC. ANY REPRODUCTION IN PART OR IN WHOLE WITHOUT THE WRITTEN PERMISSION OF THORLABS INC. IS PROHIBITED.

REVISIONS			
REV.	DESCRIPTION	DATE	APPROV.
A	INITIAL RELEASE	4/1/2019	RG
B	REPLACED STOCK ENCLOSURE WITH CUSTOM BASE, REMOVED TABS, ADDED RAISED SECTION INSIDE POCKET.	2/27/2019	RG
C	WIDEN BASE TO SINGLE SIDED DESIGN	6/24/2020	RG



- NOTES:
- INTERPRET DRAWING AS PER ASME Y14.5 - 2009 (GENERAL TOLERANCES AS DESCRIBED IN TITLE BOX)
 - CHAMFER ALL HOLES TO REMOVE BURRS AND BREAK SHARP EDGES. TUMBLE TO UNIFORM MATTE FINISH.
 - CLEAR ANODIZE FINISH: MIL-A-8625, TYPE II, CLASS 1, 0.8 mil MINIMUM ANODIZATION THICKNESS.
 - MACHINE ALL INTERNAL RADII TO 3 mm UNLESS OTHERWISE NOTED.
 - MASK HATCHED REGION FROM ANODIZATION.
 - MASK THREADED HOLES PRIOR TO ANODIZATION. AFTER ANODIZATION, CHASE THREADED HOLES WITH A TAP TO ENSURE THEY ARE CLEAR.

UNLESS OTHERWISE SPECIFIED: DIMENSIONS ARE IN MM. TOLERANCES ARE: DECIMALS .XXX ± 0.030 .XX ± 0.13 .X ± 0.3 ANGLES ± .5 SURFACE FINISH: 3 µm REMOVE ALL BURRS AND BREAK SHARP EDGES 0.1 MAX.		THIRD ANGLE PROJECTION		THORLABS Quantum Electronics 10335 GUILFORD ROAD, JESSUP MD 20794	
MATERIAL AL 6061		APPROVALS		DATE	
FINISH AS NOTED		DRAWN RG		6/24/2020	
DO NOT SCALE DRAWING		CHECKED XX		6/24/2020	
		ENGINEER RG			
		APPROV CCB			
		SCALE 1:2		SHEET 1 OF 1	
		SIZE A		DWG. NO. MEC-100-1500	
				REV. C	

BASE, QCL DRIVER